

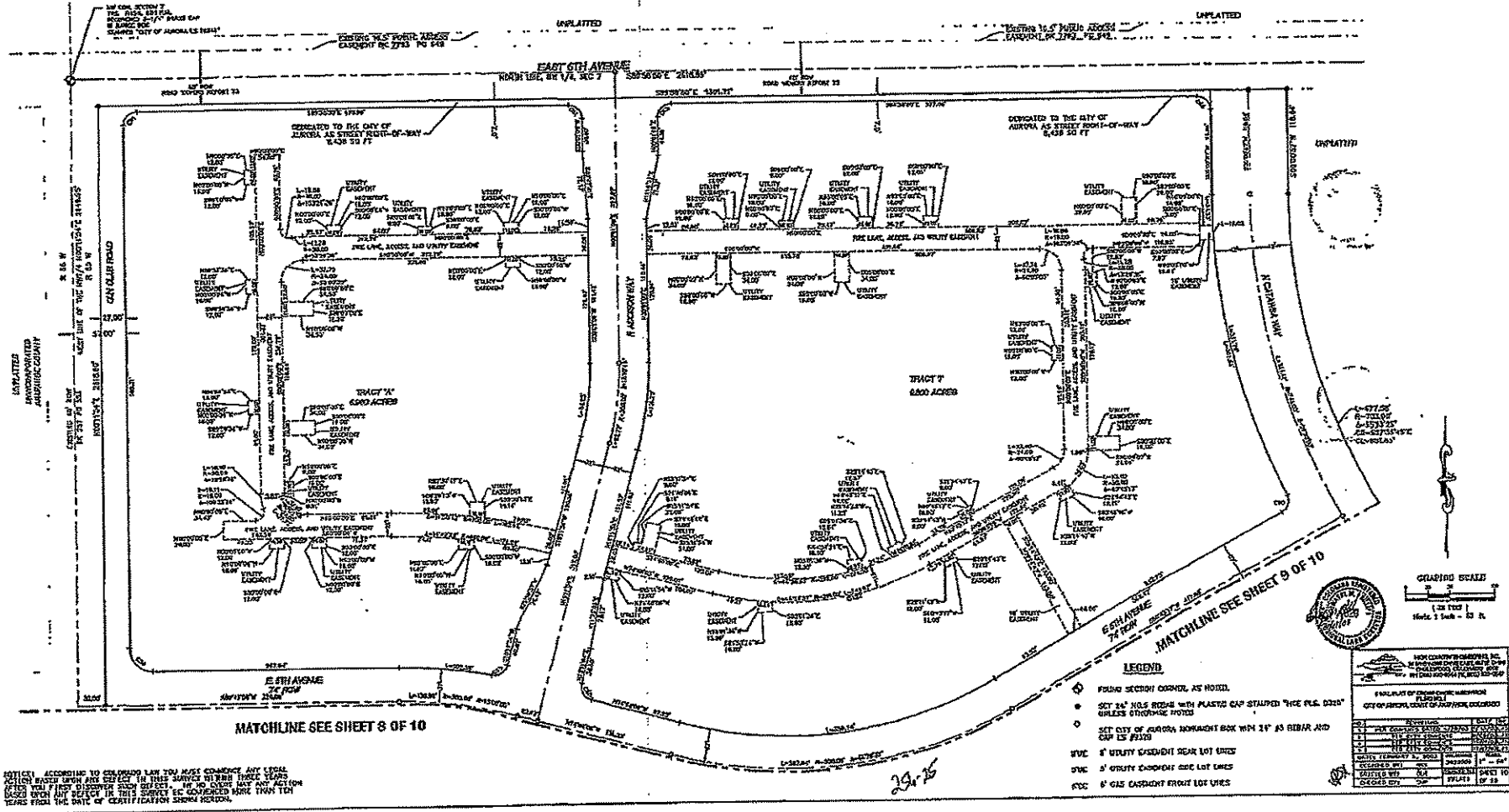
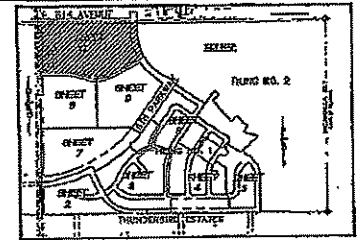
CROSS CREEK SUBDIVISION FILING NO. 1

A PART OF THE NORTH ONE-HALF OF SECTION 7, TOWNSHIP 4 SOUTH, RANGE
65 WEST OF THE SIXTH PRINCIPAL MERIDIAN,
CITY OF AURORA, COUNTY OF ANAPAOKE, STATE OF COLORADO
SHEET 10 OF 10

256-25

10/10

| TRACT | ACRES | OWNER | ADDRESS | DATE |
|-------|-------|-------|---------|------|
| 1 | 0.10 | ... | ... | ... |
| 2 | 0.10 | ... | ... | ... |
| 3 | 0.10 | ... | ... | ... |
| 4 | 0.10 | ... | ... | ... |
| 5 | 0.10 | ... | ... | ... |
| 6 | 0.10 | ... | ... | ... |
| 7 | 0.10 | ... | ... | ... |
| 8 | 0.10 | ... | ... | ... |
| 9 | 0.10 | ... | ... | ... |
| 10 | 0.10 | ... | ... | ... |
| 11 | 0.10 | ... | ... | ... |
| 12 | 0.10 | ... | ... | ... |
| 13 | 0.10 | ... | ... | ... |
| 14 | 0.10 | ... | ... | ... |
| 15 | 0.10 | ... | ... | ... |
| 16 | 0.10 | ... | ... | ... |
| 17 | 0.10 | ... | ... | ... |
| 18 | 0.10 | ... | ... | ... |
| 19 | 0.10 | ... | ... | ... |
| 20 | 0.10 | ... | ... | ... |
| 21 | 0.10 | ... | ... | ... |
| 22 | 0.10 | ... | ... | ... |
| 23 | 0.10 | ... | ... | ... |
| 24 | 0.10 | ... | ... | ... |
| 25 | 0.10 | ... | ... | ... |
| 26 | 0.10 | ... | ... | ... |
| 27 | 0.10 | ... | ... | ... |
| 28 | 0.10 | ... | ... | ... |
| 29 | 0.10 | ... | ... | ... |
| 30 | 0.10 | ... | ... | ... |
| 31 | 0.10 | ... | ... | ... |
| 32 | 0.10 | ... | ... | ... |
| 33 | 0.10 | ... | ... | ... |
| 34 | 0.10 | ... | ... | ... |
| 35 | 0.10 | ... | ... | ... |
| 36 | 0.10 | ... | ... | ... |
| 37 | 0.10 | ... | ... | ... |
| 38 | 0.10 | ... | ... | ... |
| 39 | 0.10 | ... | ... | ... |
| 40 | 0.10 | ... | ... | ... |
| 41 | 0.10 | ... | ... | ... |
| 42 | 0.10 | ... | ... | ... |
| 43 | 0.10 | ... | ... | ... |
| 44 | 0.10 | ... | ... | ... |
| 45 | 0.10 | ... | ... | ... |
| 46 | 0.10 | ... | ... | ... |
| 47 | 0.10 | ... | ... | ... |
| 48 | 0.10 | ... | ... | ... |
| 49 | 0.10 | ... | ... | ... |
| 50 | 0.10 | ... | ... | ... |
| 51 | 0.10 | ... | ... | ... |
| 52 | 0.10 | ... | ... | ... |
| 53 | 0.10 | ... | ... | ... |
| 54 | 0.10 | ... | ... | ... |
| 55 | 0.10 | ... | ... | ... |
| 56 | 0.10 | ... | ... | ... |
| 57 | 0.10 | ... | ... | ... |
| 58 | 0.10 | ... | ... | ... |
| 59 | 0.10 | ... | ... | ... |
| 60 | 0.10 | ... | ... | ... |
| 61 | 0.10 | ... | ... | ... |
| 62 | 0.10 | ... | ... | ... |
| 63 | 0.10 | ... | ... | ... |
| 64 | 0.10 | ... | ... | ... |
| 65 | 0.10 | ... | ... | ... |
| 66 | 0.10 | ... | ... | ... |
| 67 | 0.10 | ... | ... | ... |
| 68 | 0.10 | ... | ... | ... |
| 69 | 0.10 | ... | ... | ... |
| 70 | 0.10 | ... | ... | ... |
| 71 | 0.10 | ... | ... | ... |
| 72 | 0.10 | ... | ... | ... |
| 73 | 0.10 | ... | ... | ... |
| 74 | 0.10 | ... | ... | ... |
| 75 | 0.10 | ... | ... | ... |
| 76 | 0.10 | ... | ... | ... |
| 77 | 0.10 | ... | ... | ... |
| 78 | 0.10 | ... | ... | ... |
| 79 | 0.10 | ... | ... | ... |
| 80 | 0.10 | ... | ... | ... |
| 81 | 0.10 | ... | ... | ... |
| 82 | 0.10 | ... | ... | ... |
| 83 | 0.10 | ... | ... | ... |
| 84 | 0.10 | ... | ... | ... |
| 85 | 0.10 | ... | ... | ... |
| 86 | 0.10 | ... | ... | ... |
| 87 | 0.10 | ... | ... | ... |
| 88 | 0.10 | ... | ... | ... |
| 89 | 0.10 | ... | ... | ... |
| 90 | 0.10 | ... | ... | ... |
| 91 | 0.10 | ... | ... | ... |
| 92 | 0.10 | ... | ... | ... |
| 93 | 0.10 | ... | ... | ... |
| 94 | 0.10 | ... | ... | ... |
| 95 | 0.10 | ... | ... | ... |
| 96 | 0.10 | ... | ... | ... |
| 97 | 0.10 | ... | ... | ... |
| 98 | 0.10 | ... | ... | ... |
| 99 | 0.10 | ... | ... | ... |
| 100 | 0.10 | ... | ... | ... |

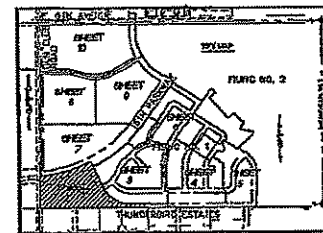


CROSS CREEK SUBDIVISION FILING NO. 1

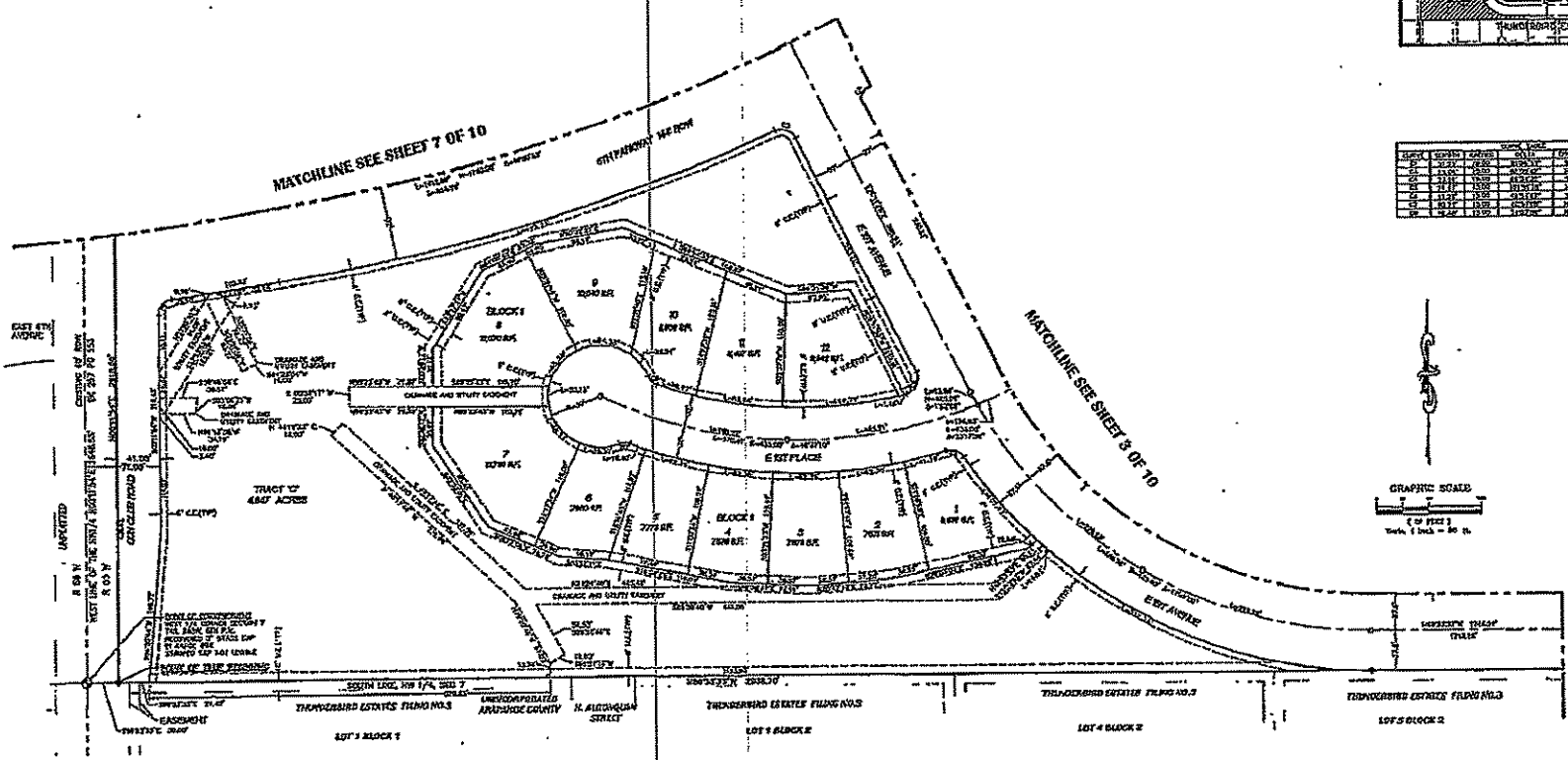
256-17

2/10

A PART OF THE NORTH ONE-HALF OF SECTION 7, TOWNSHIP 4 SOUTH, RANGE 65 WEST OF THE SIXTH PRINCIPAL MERIDIAN,
CITY OF AURORA, COUNTY OF ARAPAHOE, STATE OF COLORADO
SHEET 2 OF 10



| NO. | OWNER | PLAT | ACRES | REMARKS |
|-----|-------|------|-------|---------|
| 1 | ... | ... | ... | ... |
| 2 | ... | ... | ... | ... |
| 3 | ... | ... | ... | ... |
| 4 | ... | ... | ... | ... |
| 5 | ... | ... | ... | ... |
| 6 | ... | ... | ... | ... |
| 7 | ... | ... | ... | ... |
| 8 | ... | ... | ... | ... |
| 9 | ... | ... | ... | ... |
| 10 | ... | ... | ... | ... |
| 11 | ... | ... | ... | ... |
| 12 | ... | ... | ... | ... |
| 13 | ... | ... | ... | ... |
| 14 | ... | ... | ... | ... |
| 15 | ... | ... | ... | ... |
| 16 | ... | ... | ... | ... |
| 17 | ... | ... | ... | ... |
| 18 | ... | ... | ... | ... |
| 19 | ... | ... | ... | ... |
| 20 | ... | ... | ... | ... |
| 21 | ... | ... | ... | ... |
| 22 | ... | ... | ... | ... |
| 23 | ... | ... | ... | ... |
| 24 | ... | ... | ... | ... |
| 25 | ... | ... | ... | ... |
| 26 | ... | ... | ... | ... |
| 27 | ... | ... | ... | ... |
| 28 | ... | ... | ... | ... |
| 29 | ... | ... | ... | ... |
| 30 | ... | ... | ... | ... |
| 31 | ... | ... | ... | ... |
| 32 | ... | ... | ... | ... |
| 33 | ... | ... | ... | ... |
| 34 | ... | ... | ... | ... |
| 35 | ... | ... | ... | ... |
| 36 | ... | ... | ... | ... |
| 37 | ... | ... | ... | ... |
| 38 | ... | ... | ... | ... |
| 39 | ... | ... | ... | ... |
| 40 | ... | ... | ... | ... |
| 41 | ... | ... | ... | ... |
| 42 | ... | ... | ... | ... |
| 43 | ... | ... | ... | ... |
| 44 | ... | ... | ... | ... |
| 45 | ... | ... | ... | ... |
| 46 | ... | ... | ... | ... |
| 47 | ... | ... | ... | ... |
| 48 | ... | ... | ... | ... |
| 49 | ... | ... | ... | ... |
| 50 | ... | ... | ... | ... |



LEGEND

- FOUND SECTION CORNER, AS NOTED.
- SET 24" ROD & BEARER WITH PLASTIC CAP STAMPED "DICE PLG. #324"
- UNLESS OTHERWISE NOTED
- SET CITY OF AURORA WISEMONT BOX WITH 8" IS BEARER AND 6" IS #324
- 1/2" WIDTH EASEMENT FROM LOT LINES
- 1/4" WIDTH EASEMENT FROM LOT LINES
- 1/4" WIDTH EASEMENT FROM LOT LINES
- 6" GAP EXHAUST FRONT LOT LINES

256-17

Notations: This map was prepared by the City of Aurora, Colorado, and is subject to the provisions of the Colorado Subdivision Map Act, C.R.S. § 38-1-101.

FILED BY: [Signature]
CITY OF AURORA, COLORADO

| NO. | OWNER | PLAT | ACRES | REMARKS |
|-----|-------|------|-------|---------|
| 1 | ... | ... | ... | ... |
| 2 | ... | ... | ... | ... |
| 3 | ... | ... | ... | ... |
| 4 | ... | ... | ... | ... |
| 5 | ... | ... | ... | ... |
| 6 | ... | ... | ... | ... |
| 7 | ... | ... | ... | ... |
| 8 | ... | ... | ... | ... |
| 9 | ... | ... | ... | ... |
| 10 | ... | ... | ... | ... |
| 11 | ... | ... | ... | ... |
| 12 | ... | ... | ... | ... |
| 13 | ... | ... | ... | ... |
| 14 | ... | ... | ... | ... |
| 15 | ... | ... | ... | ... |
| 16 | ... | ... | ... | ... |
| 17 | ... | ... | ... | ... |
| 18 | ... | ... | ... | ... |
| 19 | ... | ... | ... | ... |
| 20 | ... | ... | ... | ... |
| 21 | ... | ... | ... | ... |
| 22 | ... | ... | ... | ... |
| 23 | ... | ... | ... | ... |
| 24 | ... | ... | ... | ... |
| 25 | ... | ... | ... | ... |
| 26 | ... | ... | ... | ... |
| 27 | ... | ... | ... | ... |
| 28 | ... | ... | ... | ... |
| 29 | ... | ... | ... | ... |
| 30 | ... | ... | ... | ... |
| 31 | ... | ... | ... | ... |
| 32 | ... | ... | ... | ... |
| 33 | ... | ... | ... | ... |
| 34 | ... | ... | ... | ... |
| 35 | ... | ... | ... | ... |
| 36 | ... | ... | ... | ... |
| 37 | ... | ... | ... | ... |
| 38 | ... | ... | ... | ... |
| 39 | ... | ... | ... | ... |
| 40 | ... | ... | ... | ... |
| 41 | ... | ... | ... | ... |
| 42 | ... | ... | ... | ... |
| 43 | ... | ... | ... | ... |
| 44 | ... | ... | ... | ... |
| 45 | ... | ... | ... | ... |
| 46 | ... | ... | ... | ... |
| 47 | ... | ... | ... | ... |
| 48 | ... | ... | ... | ... |
| 49 | ... | ... | ... | ... |
| 50 | ... | ... | ... | ... |

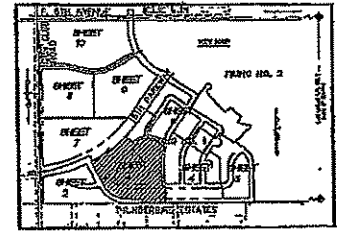
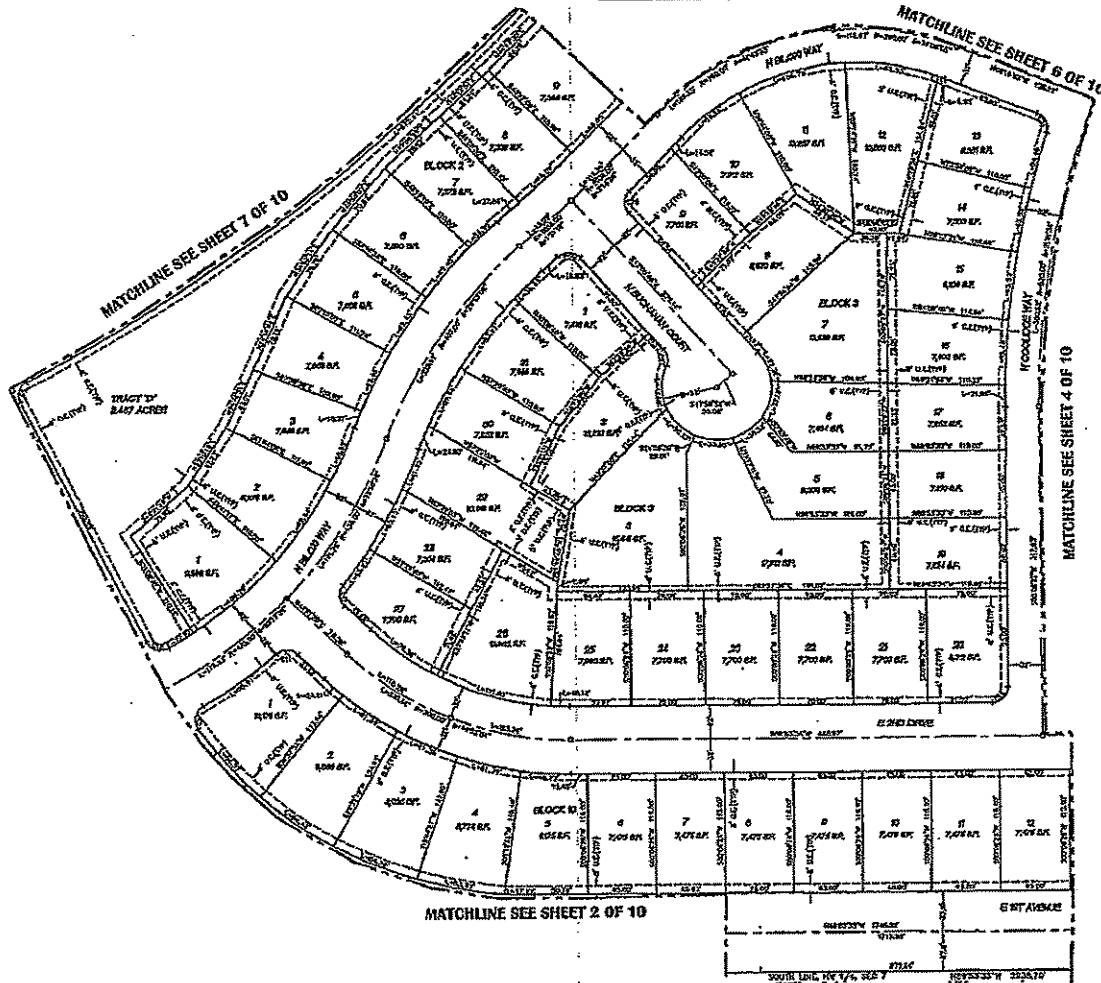
NOTICE: ACCORDING TO COLORADO LAW YOU MUST COLLECT ANY LEGAL ACTION BASED UPON ANY DEFECT IN THIS SERVICE WITHIN THREE YEARS AFTER YOU FIRST DISCOVER SUCH DEFECT. IN NO EVENT CAN AN ACTION BE BROUGHT AFTER THE DATE OF THIS NOTICE OR AFTER THE DATE OF THE FIRST DISCOVERY OF THE DEFECT, WHICHEVER IS LATER.

CROSS CREEK SUBDIVISION FILING NO. 1

A PART OF THE NORTH ONE-HALF OF SECTION 7, TOWNSHIP 4 SOUTH, RANGE 65 WEST OF THE SIXTH PRINCIPAL MERIDIAN,
CITY OF AURORA, COUNTY OF ARAPAHOE, STATE OF COLORADO
SHEET 3 OF 10

256-18

3/10



| LOT | ACRES | AREA | PERCENT | TOTAL AREA | TOTAL PERCENT |
|-------|-------|---------|---------|------------|---------------|
| 1 | 0.10 | 4,356 | 0.10 | 43,560 | 0.10 |
| 2 | 0.10 | 4,356 | 0.10 | 43,560 | 0.20 |
| 3 | 0.10 | 4,356 | 0.10 | 43,560 | 0.30 |
| 4 | 0.10 | 4,356 | 0.10 | 43,560 | 0.40 |
| 5 | 0.10 | 4,356 | 0.10 | 43,560 | 0.50 |
| 6 | 0.10 | 4,356 | 0.10 | 43,560 | 0.60 |
| 7 | 0.10 | 4,356 | 0.10 | 43,560 | 0.70 |
| 8 | 0.10 | 4,356 | 0.10 | 43,560 | 0.80 |
| 9 | 0.10 | 4,356 | 0.10 | 43,560 | 0.90 |
| 10 | 0.10 | 4,356 | 0.10 | 43,560 | 1.00 |
| 11 | 0.10 | 4,356 | 0.10 | 43,560 | 1.10 |
| 12 | 0.10 | 4,356 | 0.10 | 43,560 | 1.20 |
| 13 | 0.10 | 4,356 | 0.10 | 43,560 | 1.30 |
| 14 | 0.10 | 4,356 | 0.10 | 43,560 | 1.40 |
| 15 | 0.10 | 4,356 | 0.10 | 43,560 | 1.50 |
| 16 | 0.10 | 4,356 | 0.10 | 43,560 | 1.60 |
| 17 | 0.10 | 4,356 | 0.10 | 43,560 | 1.70 |
| 18 | 0.10 | 4,356 | 0.10 | 43,560 | 1.80 |
| 19 | 0.10 | 4,356 | 0.10 | 43,560 | 1.90 |
| 20 | 0.10 | 4,356 | 0.10 | 43,560 | 2.00 |
| 21 | 0.10 | 4,356 | 0.10 | 43,560 | 2.10 |
| 22 | 0.10 | 4,356 | 0.10 | 43,560 | 2.20 |
| 23 | 0.10 | 4,356 | 0.10 | 43,560 | 2.30 |
| 24 | 0.10 | 4,356 | 0.10 | 43,560 | 2.40 |
| 25 | 0.10 | 4,356 | 0.10 | 43,560 | 2.50 |
| 26 | 0.10 | 4,356 | 0.10 | 43,560 | 2.60 |
| 27 | 0.10 | 4,356 | 0.10 | 43,560 | 2.70 |
| 28 | 0.10 | 4,356 | 0.10 | 43,560 | 2.80 |
| 29 | 0.10 | 4,356 | 0.10 | 43,560 | 2.90 |
| 30 | 0.10 | 4,356 | 0.10 | 43,560 | 3.00 |
| 31 | 0.10 | 4,356 | 0.10 | 43,560 | 3.10 |
| 32 | 0.10 | 4,356 | 0.10 | 43,560 | 3.20 |
| TOTAL | 3.20 | 139,376 | 100.00 | 1,393,760 | 100.00 |



LEGEND

- FOUND SECTION CORNER, AS NOTED.
- SET 2" PINS BEARING WITH PLASTIC CAP STAMPED "TIC. PLS. 256-18" UNLESS OTHERWISE NOTED.
- SET CITY OF AURORA MONUMENT BOX WITH 2" x 25 BOARD AND CAP IS #1221.
- 4"UC 4" UTILITY EASEMENT REAR LOT LINES
- 5"UC 5" UTILITY EASEMENT SIDE LOT LINES
- 6"UC 6" GAS EASEMENT FRONT LOT LINES

RECORDING DIVISION
ARAPAHOE COUNTY, COLORADO

FILED IN THE OFFICE OF THE COUNTY CLERK
CITY OF AURORA, COUNTY OF ARAPAHOE, COLORADO

DATE: 3/10/18

FILE NO: 256-18

BOOK: 114-111

PAGE: 3

CLERK: [Signature]

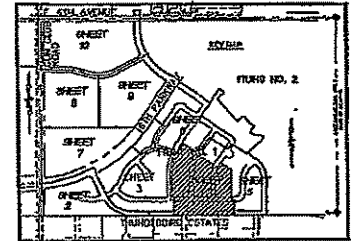
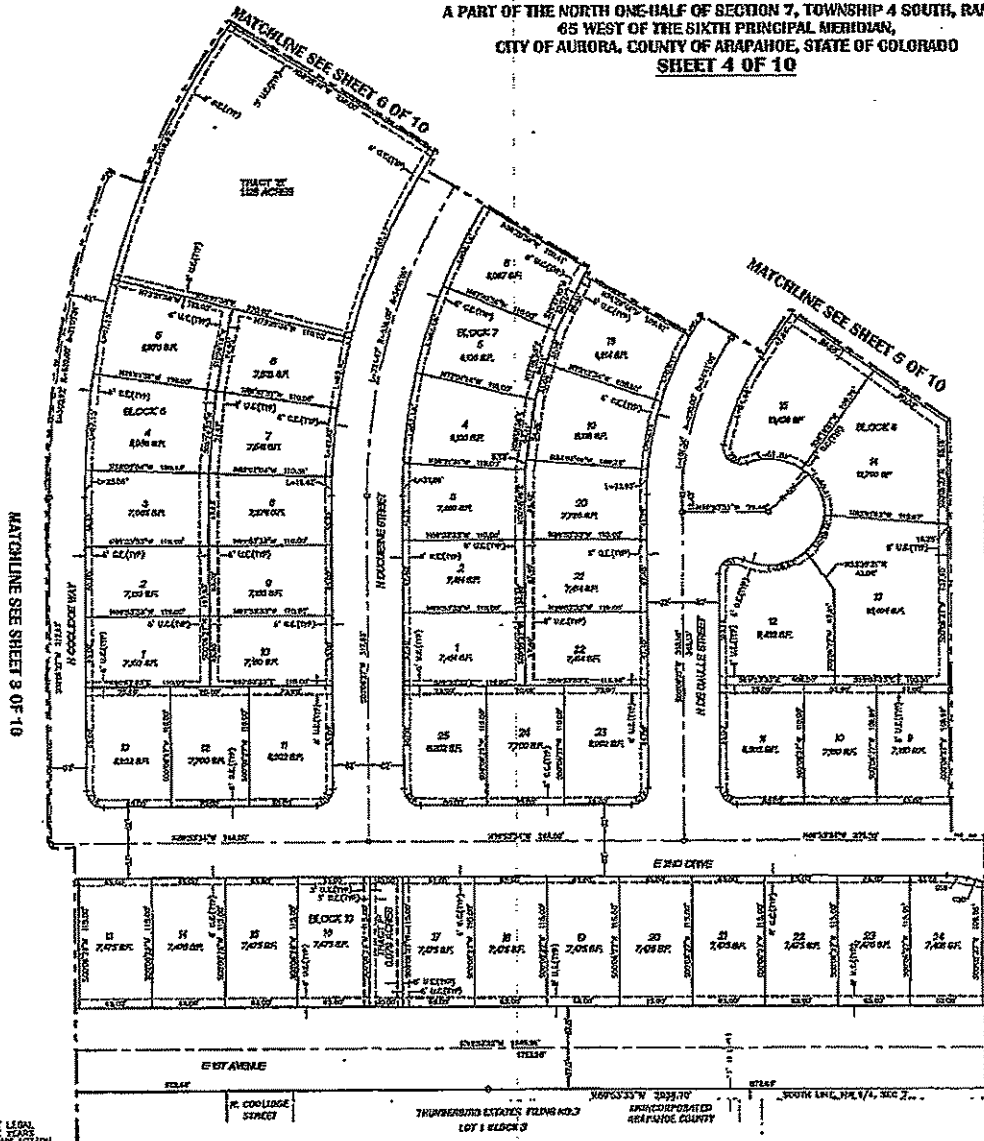
256-18

NOTICE: ACCORDING TO COLORADO LAW YOU MUST CONSIDER ANY LEGAL ACTION BASED UPON ANY DEFECT OF THIS SURVEY WITHIN THREE YEARS AFTER YOU FIRST DISCOVER SUCH DEFECT. IN NO EVENT MAY ANY ACTION BE BASED UPON ANY DEFECT IN THIS SURVEY BE COMMENCED MORE THAN TEN YEARS FROM THE DATE OF CERTIFICATION SHOWN HEREIN.

CROSS CREEK SUBDIVISION FILING NO. 1

256-19
4/10

A PART OF THE NORTH ONE-HALF OF SECTION 7, TOWNSHIP 4 SOUTH, RANGE 65 WEST OF THE SIXTH PRINCIPAL MERIDIAN,
CITY OF AURORA, COUNTY OF ARAPAHOE, STATE OF COLORADO
SHEET 4 OF 10



| BLK | LOT | AREA | OWNER | OWNER | OWNER |
|-----|-----|--------|-------|-------|-------|
| 1 | 1 | 12,000 | ... | ... | ... |
| 1 | 2 | 12,000 | ... | ... | ... |
| 1 | 3 | 12,000 | ... | ... | ... |
| 1 | 4 | 12,000 | ... | ... | ... |
| 1 | 5 | 12,000 | ... | ... | ... |
| 1 | 6 | 12,000 | ... | ... | ... |
| 1 | 7 | 12,000 | ... | ... | ... |
| 1 | 8 | 12,000 | ... | ... | ... |
| 1 | 9 | 12,000 | ... | ... | ... |
| 1 | 10 | 12,000 | ... | ... | ... |
| 2 | 11 | 12,000 | ... | ... | ... |
| 2 | 12 | 12,000 | ... | ... | ... |
| 2 | 13 | 12,000 | ... | ... | ... |
| 2 | 14 | 12,000 | ... | ... | ... |
| 2 | 15 | 12,000 | ... | ... | ... |
| 2 | 16 | 12,000 | ... | ... | ... |
| 2 | 17 | 12,000 | ... | ... | ... |
| 2 | 18 | 12,000 | ... | ... | ... |
| 2 | 19 | 12,000 | ... | ... | ... |
| 2 | 20 | 12,000 | ... | ... | ... |
| 3 | 21 | 12,000 | ... | ... | ... |
| 3 | 22 | 12,000 | ... | ... | ... |
| 3 | 23 | 12,000 | ... | ... | ... |
| 3 | 24 | 12,000 | ... | ... | ... |
| 3 | 25 | 12,000 | ... | ... | ... |



LEGEND

- ◆ FOUND SECTION CORNER AS NOTED
- SET 2 1/2" H.O.S. REBAR WITH PLASTIC CAP STAMPED "REC. PLS. 0325" UNLESS OTHERWISE NOTED
- SET CITY OF AURORA MONUMENT BOX WITH 2 1/2" #5 REBAR AND CAP IN PLACE
- VC 6' WIDTH EASEMENT NEAR LOT LINES
- VC 5' WIDTH EASEMENT SIDE LOT LINES
- VC 6' GAS EASEMENT FRONT LOT LINES

FILED FOR RECORD IN THE OFFICE OF THE COUNTY CLERK OF ARAPAHOE COUNTY, COLORADO, ON APRIL 10, 2004 AT 10:00 AM.

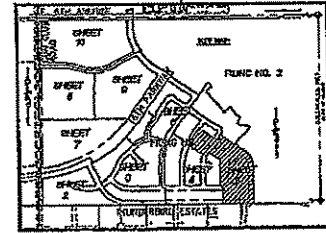
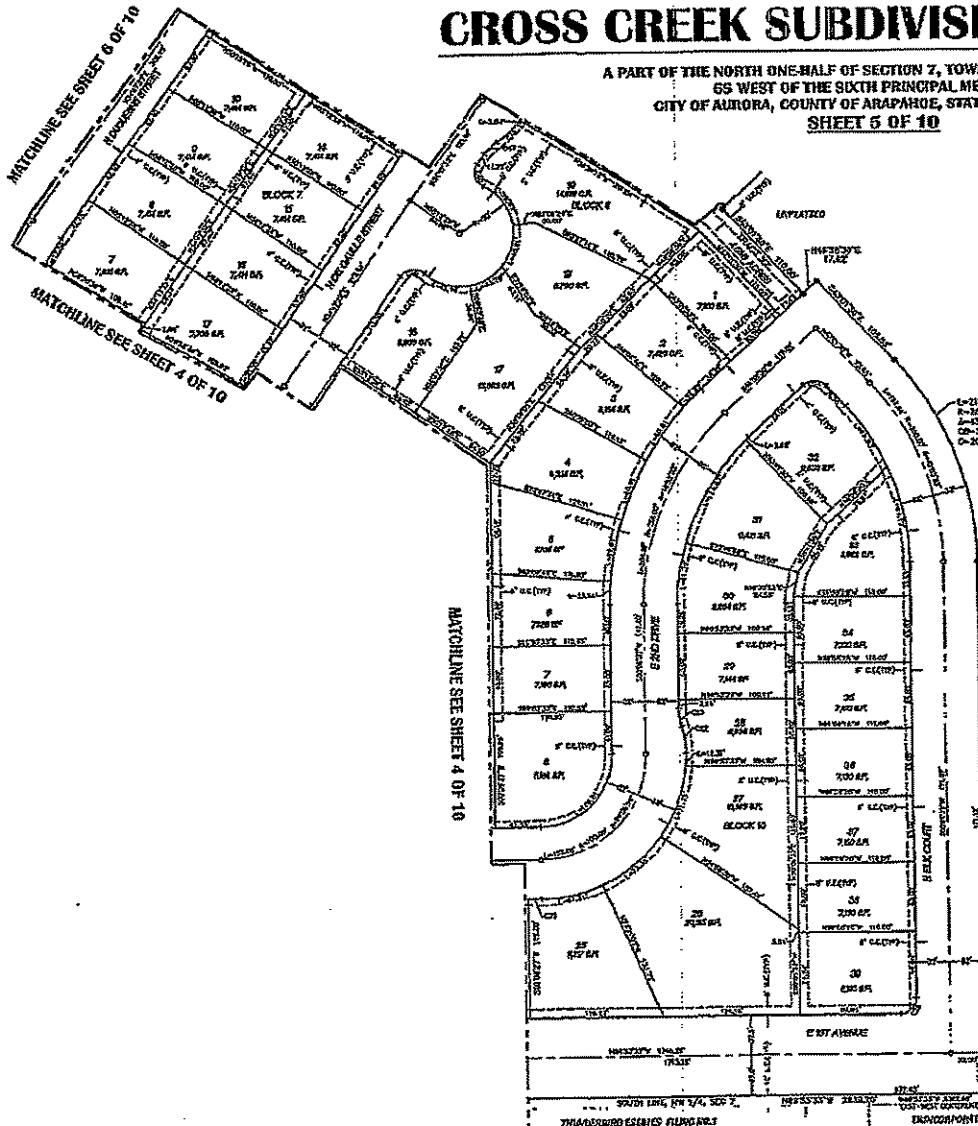
256-19

NOTICE: ACCORDING TO COLORADO LAW YOU MUST CONSIDER ANY LEGAL ACTION BASED UPON ANY DEFECT IN THIS SURVEY WITHIN THREE YEARS AFTER YOU FIRST DISCOVER SUCH DEFECT. IN NO EVENT SHALL ANY ACTION BASED UPON ANY DEFECT IN THIS SURVEY BE CONSIDERED MORE THAN TEN YEARS FROM THE DATE OF CERTIFICATION SHOWN HEREON.

CROSS CREEK SUBDIVISION FILING NO. 1

256-20
5/10

A PART OF THE NORTH ONE-HALF OF SECTION 7, TOWNSHIP 4 SOUTH, RANGE
65 WEST OF THE SIXTH PRINCIPAL MERIDIAN,
CITY OF AURORA, COUNTY OF ARAPAHOE, STATE OF COLORADO
SHEET 5 OF 10



| SECTION | TOWNSHIP | RANGE | FILE NO. | DATE |
|---------|----------|-------|----------|------|
| 1 | 4 | 65 | 256-20 | 5/10 |
| 2 | 4 | 65 | 256-21 | 5/10 |
| 3 | 4 | 65 | 256-22 | 5/10 |
| 4 | 4 | 65 | 256-23 | 5/10 |
| 5 | 4 | 65 | 256-24 | 5/10 |
| 6 | 4 | 65 | 256-25 | 5/10 |
| 7 | 4 | 65 | 256-26 | 5/10 |
| 8 | 4 | 65 | 256-27 | 5/10 |
| 9 | 4 | 65 | 256-28 | 5/10 |
| 10 | 4 | 65 | 256-29 | 5/10 |
| 11 | 4 | 65 | 256-30 | 5/10 |
| 12 | 4 | 65 | 256-31 | 5/10 |
| 13 | 4 | 65 | 256-32 | 5/10 |
| 14 | 4 | 65 | 256-33 | 5/10 |
| 15 | 4 | 65 | 256-34 | 5/10 |
| 16 | 4 | 65 | 256-35 | 5/10 |
| 17 | 4 | 65 | 256-36 | 5/10 |
| 18 | 4 | 65 | 256-37 | 5/10 |
| 19 | 4 | 65 | 256-38 | 5/10 |
| 20 | 4 | 65 | 256-39 | 5/10 |
| 21 | 4 | 65 | 256-40 | 5/10 |
| 22 | 4 | 65 | 256-41 | 5/10 |
| 23 | 4 | 65 | 256-42 | 5/10 |
| 24 | 4 | 65 | 256-43 | 5/10 |
| 25 | 4 | 65 | 256-44 | 5/10 |
| 26 | 4 | 65 | 256-45 | 5/10 |
| 27 | 4 | 65 | 256-46 | 5/10 |
| 28 | 4 | 65 | 256-47 | 5/10 |
| 29 | 4 | 65 | 256-48 | 5/10 |
| 30 | 4 | 65 | 256-49 | 5/10 |
| 31 | 4 | 65 | 256-50 | 5/10 |
| 32 | 4 | 65 | 256-51 | 5/10 |



- LEGEND**
- ◆ FOUND SECTION CORNER AS NOTED
 - ◆ SET 24" HOLE REBAR WITH PLASTIC CAP STAMPED "ICC PLS. 8221" UNLESS OTHERWISE NOTED
 - ◆ SET CITY OF AURORA MONUMENT DOW NIRM 24" #5 REBAR AND CAP (S 222)
 - STC 5' UTILITY EASEMENT REAR LOT LINES
 - STUC 5' UTILITY EASEMENT SIDE LOT LINES
 - STC 5' GAS EASEMENT FRONT LOT LINES

HOODLUND & BURNHAM INC.
REGISTERED PROFESSIONAL ENGINEERS
1715 WEST 14TH AVENUE, SUITE 200
DENVER, COLORADO 80202

PUBLIC PLAT OF INTERESTING MERIDIAN
RANGE 65 WEST OF THE SIXTH PRINCIPAL MERIDIAN
TOWNSHIP 4 SOUTH, RANGE 65 WEST OF THE SIXTH PRINCIPAL MERIDIAN,
CITY OF AURORA, COUNTY OF ARAPAHOE, STATE OF COLORADO

| SECTION | TOWNSHIP | RANGE | FILE NO. | DATE |
|---------|----------|-------|----------|------|
| 1 | 4 | 65 | 256-20 | 5/10 |
| 2 | 4 | 65 | 256-21 | 5/10 |
| 3 | 4 | 65 | 256-22 | 5/10 |
| 4 | 4 | 65 | 256-23 | 5/10 |
| 5 | 4 | 65 | 256-24 | 5/10 |
| 6 | 4 | 65 | 256-25 | 5/10 |
| 7 | 4 | 65 | 256-26 | 5/10 |
| 8 | 4 | 65 | 256-27 | 5/10 |
| 9 | 4 | 65 | 256-28 | 5/10 |
| 10 | 4 | 65 | 256-29 | 5/10 |
| 11 | 4 | 65 | 256-30 | 5/10 |
| 12 | 4 | 65 | 256-31 | 5/10 |
| 13 | 4 | 65 | 256-32 | 5/10 |
| 14 | 4 | 65 | 256-33 | 5/10 |
| 15 | 4 | 65 | 256-34 | 5/10 |
| 16 | 4 | 65 | 256-35 | 5/10 |
| 17 | 4 | 65 | 256-36 | 5/10 |
| 18 | 4 | 65 | 256-37 | 5/10 |
| 19 | 4 | 65 | 256-38 | 5/10 |
| 20 | 4 | 65 | 256-39 | 5/10 |
| 21 | 4 | 65 | 256-40 | 5/10 |
| 22 | 4 | 65 | 256-41 | 5/10 |
| 23 | 4 | 65 | 256-42 | 5/10 |
| 24 | 4 | 65 | 256-43 | 5/10 |
| 25 | 4 | 65 | 256-44 | 5/10 |
| 26 | 4 | 65 | 256-45 | 5/10 |
| 27 | 4 | 65 | 256-46 | 5/10 |
| 28 | 4 | 65 | 256-47 | 5/10 |
| 29 | 4 | 65 | 256-48 | 5/10 |
| 30 | 4 | 65 | 256-49 | 5/10 |
| 31 | 4 | 65 | 256-50 | 5/10 |
| 32 | 4 | 65 | 256-51 | 5/10 |

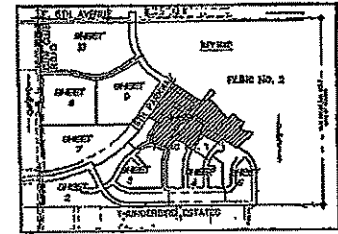


NOTICE: ACCORDING TO COLORADO LAW YOU MUST CONSIDER ANY LEGAL ACTION BASED UPON ANY DEFECT IN THIS SURVEY WITHIN THIRTY (30) DAYS AFTER YOU FIRST DISCOVER SUCH DEFECT. IN NO EVENT MAY ANY ACTION BASED UPON ANY DEFECT IN THIS SURVEY BE COMMENCED MORE THAN TEN YEARS FROM THE DATE OF CERTIFICATION BEING PRESENT.

CROSS CREEK SUBDIVISION FILING NO. 1

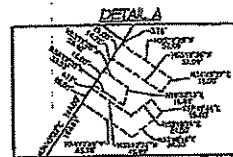
A PART OF THE NORTH ONE-HALF OF SECTION 7, TOWNSHIP 4 SOUTH, RANGE
65 WEST OF THE SIXTH PRINCIPAL MERIDIAN,
CITY OF AURORA, COUNTY OF ARAPAHOE, STATE OF COLORADO
SHEET 6 OF 10

256-21
6/10



| Lot No. | Area (sq. ft.) | Area (sq. ft.) | Area (sq. ft.) | Area (sq. ft.) | Area (sq. ft.) |
|---------|----------------|----------------|----------------|----------------|----------------|
| 1 | 7,200 | 7,200 | 7,200 | 7,200 | 7,200 |
| 2 | 7,200 | 7,200 | 7,200 | 7,200 | 7,200 |
| 3 | 7,200 | 7,200 | 7,200 | 7,200 | 7,200 |
| 4 | 7,200 | 7,200 | 7,200 | 7,200 | 7,200 |
| 5 | 7,200 | 7,200 | 7,200 | 7,200 | 7,200 |
| 6 | 7,200 | 7,200 | 7,200 | 7,200 | 7,200 |
| 7 | 7,200 | 7,200 | 7,200 | 7,200 | 7,200 |
| 8 | 7,200 | 7,200 | 7,200 | 7,200 | 7,200 |
| 9 | 7,200 | 7,200 | 7,200 | 7,200 | 7,200 |
| 10 | 7,200 | 7,200 | 7,200 | 7,200 | 7,200 |
| 11 | 7,200 | 7,200 | 7,200 | 7,200 | 7,200 |
| 12 | 7,200 | 7,200 | 7,200 | 7,200 | 7,200 |
| 13 | 7,200 | 7,200 | 7,200 | 7,200 | 7,200 |
| 14 | 7,200 | 7,200 | 7,200 | 7,200 | 7,200 |
| 15 | 7,200 | 7,200 | 7,200 | 7,200 | 7,200 |
| 16 | 7,200 | 7,200 | 7,200 | 7,200 | 7,200 |
| 17 | 7,200 | 7,200 | 7,200 | 7,200 | 7,200 |
| 18 | 7,200 | 7,200 | 7,200 | 7,200 | 7,200 |
| 19 | 7,200 | 7,200 | 7,200 | 7,200 | 7,200 |
| 20 | 7,200 | 7,200 | 7,200 | 7,200 | 7,200 |
| 21 | 7,200 | 7,200 | 7,200 | 7,200 | 7,200 |
| 22 | 7,200 | 7,200 | 7,200 | 7,200 | 7,200 |
| 23 | 7,200 | 7,200 | 7,200 | 7,200 | 7,200 |
| 24 | 7,200 | 7,200 | 7,200 | 7,200 | 7,200 |
| 25 | 7,200 | 7,200 | 7,200 | 7,200 | 7,200 |
| 26 | 7,200 | 7,200 | 7,200 | 7,200 | 7,200 |
| 27 | 7,200 | 7,200 | 7,200 | 7,200 | 7,200 |
| 28 | 7,200 | 7,200 | 7,200 | 7,200 | 7,200 |
| 29 | 7,200 | 7,200 | 7,200 | 7,200 | 7,200 |
| 30 | 7,200 | 7,200 | 7,200 | 7,200 | 7,200 |
| 31 | 7,200 | 7,200 | 7,200 | 7,200 | 7,200 |
| 32 | 7,200 | 7,200 | 7,200 | 7,200 | 7,200 |
| 33 | 7,200 | 7,200 | 7,200 | 7,200 | 7,200 |
| 34 | 7,200 | 7,200 | 7,200 | 7,200 | 7,200 |
| 35 | 7,200 | 7,200 | 7,200 | 7,200 | 7,200 |
| 36 | 7,200 | 7,200 | 7,200 | 7,200 | 7,200 |
| 37 | 7,200 | 7,200 | 7,200 | 7,200 | 7,200 |
| 38 | 7,200 | 7,200 | 7,200 | 7,200 | 7,200 |
| 39 | 7,200 | 7,200 | 7,200 | 7,200 | 7,200 |
| 40 | 7,200 | 7,200 | 7,200 | 7,200 | 7,200 |
| 41 | 7,200 | 7,200 | 7,200 | 7,200 | 7,200 |
| 42 | 7,200 | 7,200 | 7,200 | 7,200 | 7,200 |
| 43 | 7,200 | 7,200 | 7,200 | 7,200 | 7,200 |
| 44 | 7,200 | 7,200 | 7,200 | 7,200 | 7,200 |
| 45 | 7,200 | 7,200 | 7,200 | 7,200 | 7,200 |
| 46 | 7,200 | 7,200 | 7,200 | 7,200 | 7,200 |
| 47 | 7,200 | 7,200 | 7,200 | 7,200 | 7,200 |
| 48 | 7,200 | 7,200 | 7,200 | 7,200 | 7,200 |
| 49 | 7,200 | 7,200 | 7,200 | 7,200 | 7,200 |
| 50 | 7,200 | 7,200 | 7,200 | 7,200 | 7,200 |
| 51 | 7,200 | 7,200 | 7,200 | 7,200 | 7,200 |
| 52 | 7,200 | 7,200 | 7,200 | 7,200 | 7,200 |
| 53 | 7,200 | 7,200 | 7,200 | 7,200 | 7,200 |
| 54 | 7,200 | 7,200 | 7,200 | 7,200 | 7,200 |
| 55 | 7,200 | 7,200 | 7,200 | 7,200 | 7,200 |
| 56 | 7,200 | 7,200 | 7,200 | 7,200 | 7,200 |
| 57 | 7,200 | 7,200 | 7,200 | 7,200 | 7,200 |
| 58 | 7,200 | 7,200 | 7,200 | 7,200 | 7,200 |
| 59 | 7,200 | 7,200 | 7,200 | 7,200 | 7,200 |
| 60 | 7,200 | 7,200 | 7,200 | 7,200 | 7,200 |
| 61 | 7,200 | 7,200 | 7,200 | 7,200 | 7,200 |
| 62 | 7,200 | 7,200 | 7,200 | 7,200 | 7,200 |
| 63 | 7,200 | 7,200 | 7,200 | 7,200 | 7,200 |
| 64 | 7,200 | 7,200 | 7,200 | 7,200 | 7,200 |
| 65 | 7,200 | 7,200 | 7,200 | 7,200 | 7,200 |
| 66 | 7,200 | 7,200 | 7,200 | 7,200 | 7,200 |
| 67 | 7,200 | 7,200 | 7,200 | 7,200 | 7,200 |
| 68 | 7,200 | 7,200 | 7,200 | 7,200 | 7,200 |
| 69 | 7,200 | 7,200 | 7,200 | 7,200 | 7,200 |
| 70 | 7,200 | 7,200 | 7,200 | 7,200 | 7,200 |
| 71 | 7,200 | 7,200 | 7,200 | 7,200 | 7,200 |
| 72 | 7,200 | 7,200 | 7,200 | 7,200 | 7,200 |
| 73 | 7,200 | 7,200 | 7,200 | 7,200 | 7,200 |
| 74 | 7,200 | 7,200 | 7,200 | 7,200 | 7,200 |
| 75 | 7,200 | 7,200 | 7,200 | 7,200 | 7,200 |
| 76 | 7,200 | 7,200 | 7,200 | 7,200 | 7,200 |
| 77 | 7,200 | 7,200 | 7,200 | 7,200 | 7,200 |
| 78 | 7,200 | 7,200 | 7,200 | 7,200 | 7,200 |
| 79 | 7,200 | 7,200 | 7,200 | 7,200 | 7,200 |
| 80 | 7,200 | 7,200 | 7,200 | 7,200 | 7,200 |
| 81 | 7,200 | 7,200 | 7,200 | 7,200 | 7,200 |
| 82 | 7,200 | 7,200 | 7,200 | 7,200 | 7,200 |
| 83 | 7,200 | 7,200 | 7,200 | 7,200 | 7,200 |
| 84 | 7,200 | 7,200 | 7,200 | 7,200 | 7,200 |
| 85 | 7,200 | 7,200 | 7,200 | 7,200 | 7,200 |
| 86 | 7,200 | 7,200 | 7,200 | 7,200 | 7,200 |
| 87 | 7,200 | 7,200 | 7,200 | 7,200 | 7,200 |
| 88 | 7,200 | 7,200 | 7,200 | 7,200 | 7,200 |
| 89 | 7,200 | 7,200 | 7,200 | 7,200 | 7,200 |
| 90 | 7,200 | 7,200 | 7,200 | 7,200 | 7,200 |
| 91 | 7,200 | 7,200 | 7,200 | 7,200 | 7,200 |
| 92 | 7,200 | 7,200 | 7,200 | 7,200 | 7,200 |
| 93 | 7,200 | 7,200 | 7,200 | 7,200 | 7,200 |
| 94 | 7,200 | 7,200 | 7,200 | 7,200 | 7,200 |
| 95 | 7,200 | 7,200 | 7,200 | 7,200 | 7,200 |
| 96 | 7,200 | 7,200 | 7,200 | 7,200 | 7,200 |
| 97 | 7,200 | 7,200 | 7,200 | 7,200 | 7,200 |
| 98 | 7,200 | 7,200 | 7,200 | 7,200 | 7,200 |
| 99 | 7,200 | 7,200 | 7,200 | 7,200 | 7,200 |
| 100 | 7,200 | 7,200 | 7,200 | 7,200 | 7,200 |

- LEGEND**
- FOUND RECORD CORNER, AS NOTED.
 - SET 2 1/2" BOLT NEAR WITH PLASTIC CAP STAMPED "THE P.L.S. 9337" UNLESS OTHERWISE NOTED.
 - SET CITY OF AURORA WORKMANT BOLT WITH 2" #5 REBAR AND CAP L.S. 9333.
 - WUE 4' UTILITY EASEMENT NEAR LOT LINES.
 - SUE 5' UTILITY EASEMENT OVER LOT LINES.
 - SEC 4' GAS EASEMENT FROM LOT LINES.



NOTICE: ACCORDING TO COLORADO LAW YOU MUST COME AND INSPECT THIS LEGAL SECTION BEFORE ANY DEEDS IN THIS AMOUNT ARE RECORDED. THEREAFTER YOU MUST FIRST OBTAIN SUCH DEEDS. IN NO EVENT SHALL ANY ACTION BE TAKEN UPON ANY DEEDS IN THIS SURVEY BE COMPLETED MORE THAN TEN YEARS FROM THE DATE OF CERTIFICATION SHOWN HEREON.

JOHN W. HARRIS, P.E.
 LICENSE NO. 12345
 CITY OF AURORA, COUNTY OF ARAPAHOE, COLORADO
 THIS IS A PART OF CROSS CREEK SUBDIVISION
 PLAT NO. 1
 CITY OF AURORA, COUNTY OF ARAPAHOE, COLORADO
 PREPARED BY: J.W. HARRIS
 CHECKED BY: J.W. HARRIS
 DATE: 6/10/21
 SHEET NO. 6 OF 10

CROSS CREEK SUBDIVISION FILING NO. 1

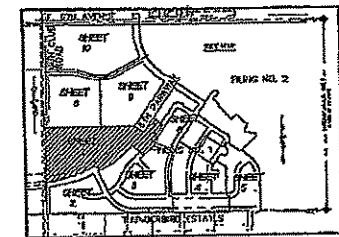
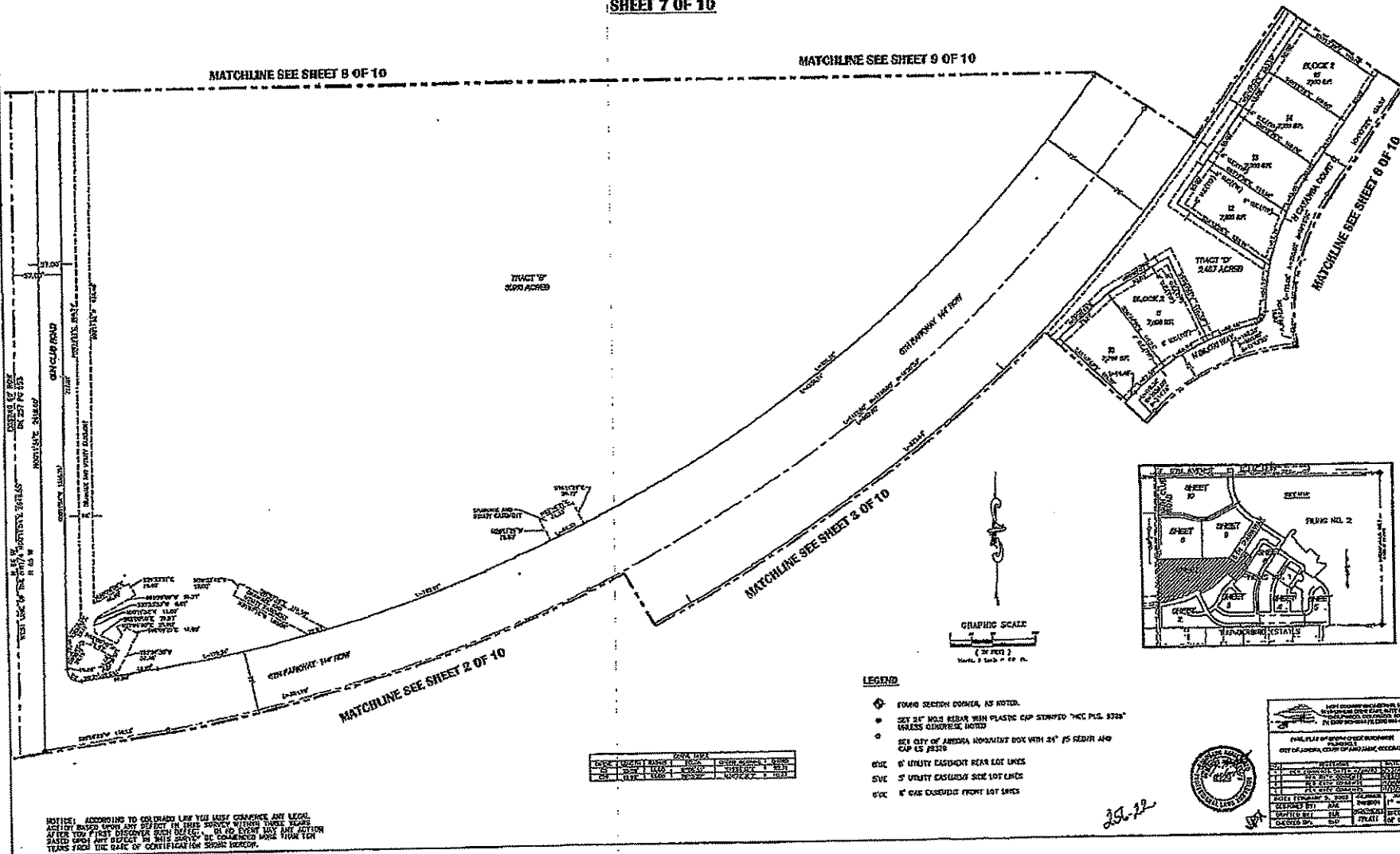
256-22

7/10

A PART OF THE NORTH ONE-HALF OF SECTION 7, TOWNSHIP 4 SOUTH, RANGE
85 WEST OF THE SIXTH PRINCIPAL MERIDIAN,
CITY OF AURORA, COUNTY OF ARAPAHOE, STATE OF COLORADO
SHEET 7 OF 10

MATCHLINE SEE SHEET 8 OF 10

MATCHLINE SEE SHEET 9 OF 10



- LEGEND**
- ◆ FOUND SECTION CORNER, AS NOTED.
 - SET 24" HGS REBAR WITH PLASTIC CAP STAMPED "MCC PLS. 8724" UNLESS OTHERWISE NOTED.
 - SET CITY OF AURORA MONUMENT BOX WITH 24" FS REBAR AND CAP AS SHOWN.
 - 6" UTILITY EASEMENT REAR LOT LINES
 - 5" UTILITY EASEMENT SIDE LOT LINES
 - 6" GAS EASEMENT FRONT LOT LINES

| AREA DATA | |
|-----------|--------|
| ACRES | 1.700 |
| SQ. FT. | 37,740 |
| SQ. YD. | 4,300 |

NOTICE: ACCORDING TO COLORADO LAW YOU MUST CORRECT ANY LEGAL MISTAKE BEFORE ANY SUBJECT TO THIS SUBDIVISION IS RECORDED. AFTER YOU FIRST DISCOVER SUCH MISTAKE, IN NO EVENT MAY THE ACTION BE TAKEN TO CORRECT IT BE LATER THAN THE DATE OF RECORDING THIS SUBDIVISION. THE DATE OF RECORDING IS THE DATE OF CERTIFICATION SIGNATURE.

| CITY OF AURORA, COLORADO | |
|--------------------------|----------------|
| FILE NO. | 256-22 |
| FILED | 7/10 |
| DATE | 7/10 |
| BY | [Signature] |
| TITLE | CITY ENGINEER |
| OFFICE | CITY OF AURORA |



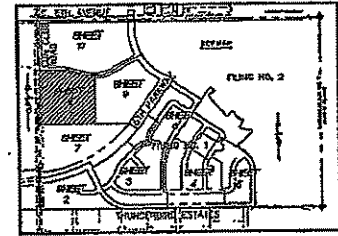
256-22

CROSS CREEK SUBDIVISION FILING NO. 1

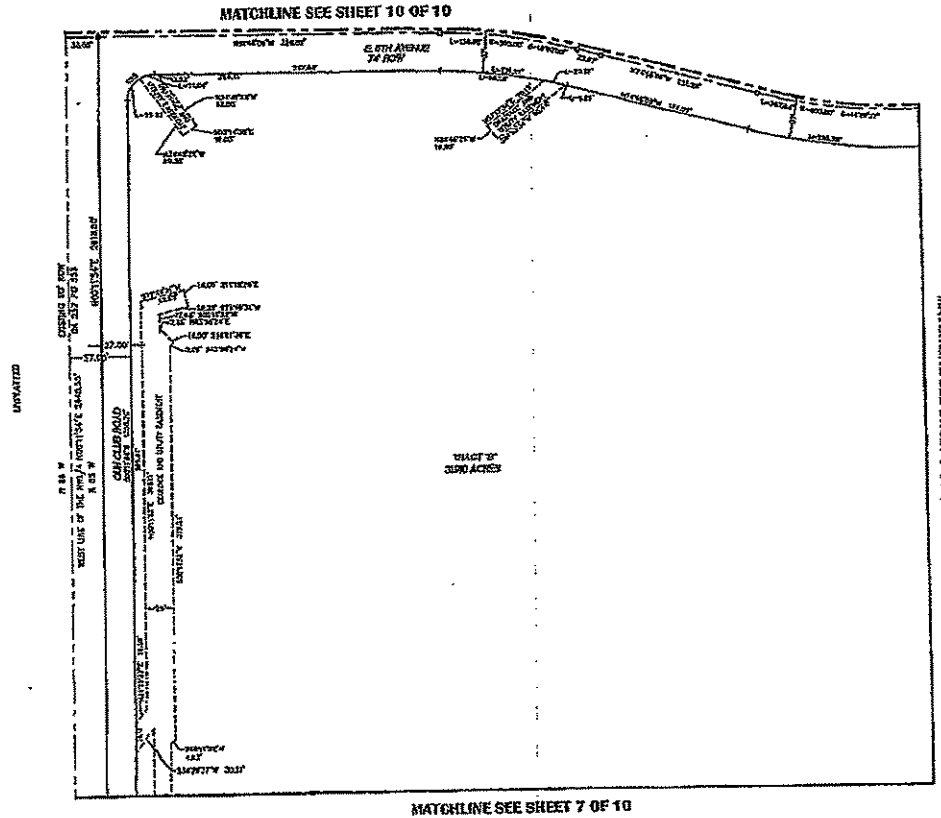
A PART OF THE NORTH ONE-HALF OF SECTION 7, TOWNSHIP 4 SOUTH, RANGE
85 WEST OF THE SIXTH PRINCIPAL MERIDIAN,
CITY OF AURORA, COUNTY OF ARAPAHOE, STATE OF COLORADO
SHEET 8 OF 10

256-23

8/10



| NO. | DESCRIPTION | DATE | BY |
|-----|-------------|---------|-----|
| 1 | FILED | 8/10/04 | PLM |
| 2 | FILED | 8/10/04 | PLM |
| 3 | FILED | 8/10/04 | PLM |
| 4 | FILED | 8/10/04 | PLM |
| 5 | FILED | 8/10/04 | PLM |
| 6 | FILED | 8/10/04 | PLM |
| 7 | FILED | 8/10/04 | PLM |
| 8 | FILED | 8/10/04 | PLM |
| 9 | FILED | 8/10/04 | PLM |
| 10 | FILED | 8/10/04 | PLM |



- LEGEND**
- ◆ FOUND SCOURH CORNER, AS NOTED.
 - SET 24" IRON BOLL WITH PLASTIC CAP STAMPED "C&E P.L.S. 8328"
 - SET CITY OF AURORA MONUMENT BOX WITH 24" 25 REBAR IRON CAP 15 18328
 - 4"UC UTILITY EASEMENT REAR LOT LINES
 - 3"UC UTILITY EASEMENT SIDE LOT LINES
 - 6"UC 6" GAS EASEMENT FRONT LOT LINES

CONCRETEWORKERS, INC.
1400 17TH AVENUE, SUITE 100
AURORA, CO 80012
PH: (303) 733-1111 FAX: (303) 733-1112

PUBLICITY OF LOCAL GOVERNMENT RECORDS
CITY OF AURORA, COUNTY OF ARAPAHOE, COLORADO

| | | |
|-------|---------|-----|
| FILED | 8/10/04 | PLM |
| FILED | 8/10/04 | PLM |
| FILED | 8/10/04 | PLM |
| FILED | 8/10/04 | PLM |
| FILED | 8/10/04 | PLM |
| FILED | 8/10/04 | PLM |
| FILED | 8/10/04 | PLM |
| FILED | 8/10/04 | PLM |
| FILED | 8/10/04 | PLM |
| FILED | 8/10/04 | PLM |

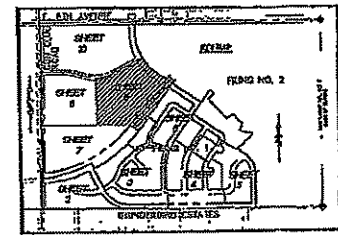
NOTICE: ACCORDING TO COLORADO LAW YOU MUST COMPLY ANY LEGAL ACTION DATED WITHIN AN EXPIRE IN THIS DIVISION WITHIN THREE YEARS AFTER YOU FIRST DISCOVER SUCH DEFECT. IN NO EVENT MAY ANY ACTION BE TAKEN AGAINST ANY AGENT OR THIS DIVISION BE COLLECTED MORE THAN TEN YEARS FROM THE DATE OF CERTIFICATION SHOWN THEREON.

CROSS CREEK SUBDIVISION FILING NO. 1

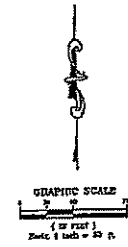
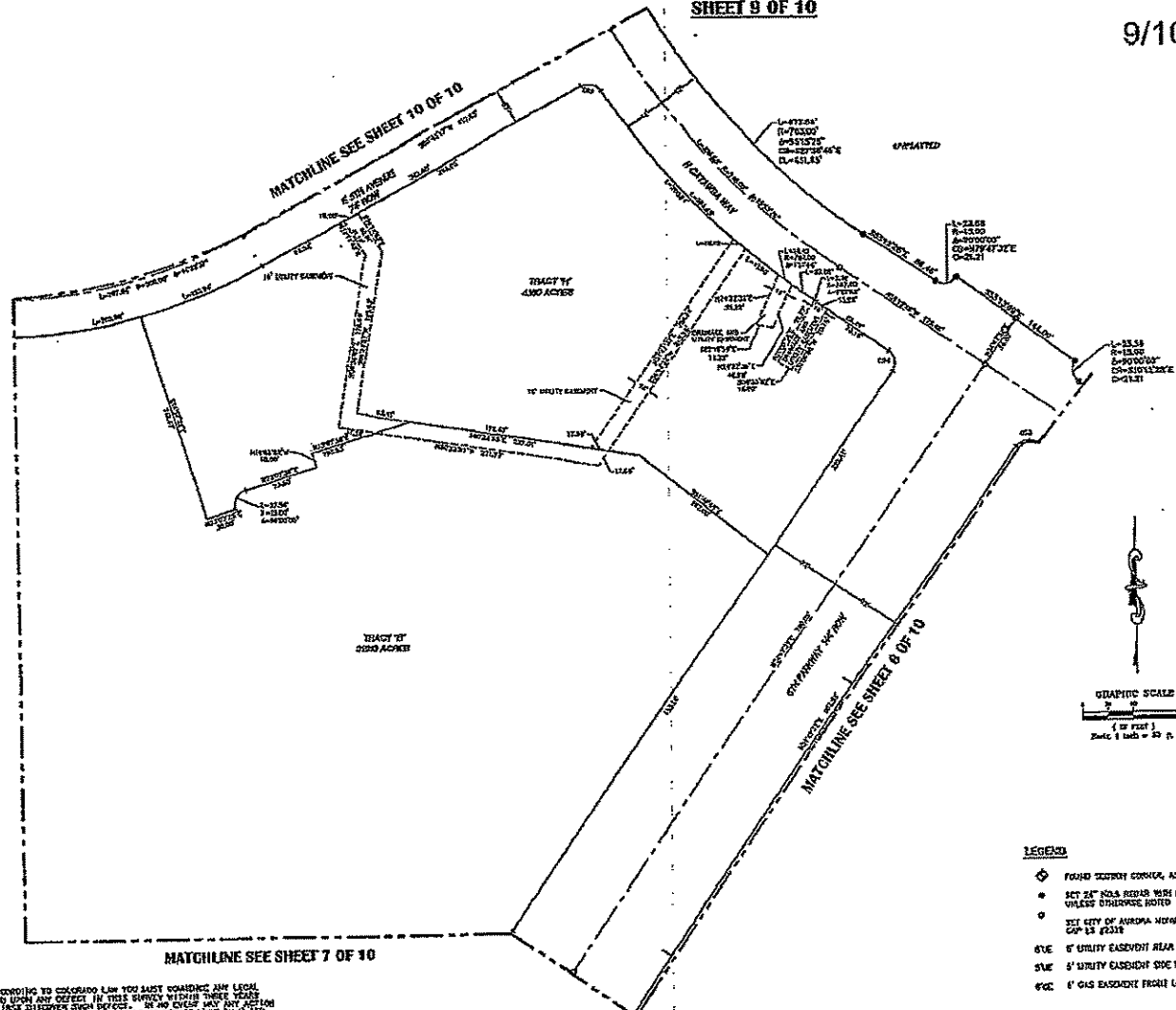
A PART OF THE NORTH ONE-HALF OF SECTION 7, TOWNSHIP 4 SOUTH, RANGE
65 WEST OF THE SIXTH PRINCIPAL MERIDIAN,
CITY OF AURORA, COUNTY OF ARAPAHO, STATE OF COLORADO
SHEET 9 OF 10

256-24

9/10



| TRACT NO. | ACRES | AREA | PERCENTAGE |
|-----------|-------|------|------------|
| 1 | 1.00 | 1.00 | 100.00 |
| 2 | 1.00 | 1.00 | 100.00 |
| 3 | 1.00 | 1.00 | 100.00 |
| 4 | 1.00 | 1.00 | 100.00 |
| 5 | 1.00 | 1.00 | 100.00 |
| 6 | 1.00 | 1.00 | 100.00 |
| 7 | 1.00 | 1.00 | 100.00 |
| 8 | 1.00 | 1.00 | 100.00 |
| 9 | 1.00 | 1.00 | 100.00 |
| 10 | 1.00 | 1.00 | 100.00 |



LEGEND

- ◆ FOUND SURVEY CORNER, AS NOTED
- SET 24" POLY BARS WITH PLASTIC CAP STAKES "ONE PLS. 2420" UNLESS OTHERWISE NOTED
- SET CITY OF AURORA METEOROLOG BORN WITH 24" 65 PDS. AND CAP 18 2218
- 6VE 6' UTILITY EASEMENT REAR LOT LINES
- 6WE 6' UTILITY EASEMENT SIDE LOT LINES
- 6FC 6' GAS EASEMENT FRONT LOT LINES



| NO. | DATE | DESCRIPTION | BY |
|-----|------------|-------------|-----|
| 1 | 11/11/2004 | FILED | ... |
| 2 | 11/11/2004 | FILED | ... |
| 3 | 11/11/2004 | FILED | ... |
| 4 | 11/11/2004 | FILED | ... |
| 5 | 11/11/2004 | FILED | ... |
| 6 | 11/11/2004 | FILED | ... |
| 7 | 11/11/2004 | FILED | ... |
| 8 | 11/11/2004 | FILED | ... |
| 9 | 11/11/2004 | FILED | ... |
| 10 | 11/11/2004 | FILED | ... |

NOTICE: ACCORDING TO COLORADO LAW YOU MUST CONSIDER ANY LEGAL ACTION BASED UPON ANY DEFECT IN THIS SURVEY WITHIN THREE YEARS AFTER YOU FIRST DISCOVER SUCH DEFECT. IN NO EVENT MAY ANY ACTION BE BASED UPON ANY DEFECT IN THIS SURVEY BE COMMENCED MORE THAN TEN YEARS FROM THE DATE OF COMPLETION SHOWN HEREIN.